

**The Concept**

The landscape design provides a series of varied garden spaces that respond to the orientation of the site and provide differing levels of privacy for the family. Four character areas have been identified on the site.

**'The Lane'**

This area forms the entrance to the site and is designed as a gravel drive with stabilised gravel and planted margins. 'The Lane' is terminated by a 'white' rendered wall incorporating a wall-sculpture to create a vista-stop when viewed from the St Barnabas Road; this forms the first view of the house from the street.

**'Yew Yard'**

The existing Yew tree forms the focus of this space. There are three parking spaces provided under the tree. The paving in this area is permeable stabilised and resin-bound gravels.

It is proposed that the crown of the tree is lifted to provide access for construction traffic and permit more light into the space. The existing worn tarmac surface will be replaced with stabilised pea-gravel or resin-bound gravel with clipped Box hedges (*Buxus sempervirens*) and shade-loving wall-climbers such as *Hydrangea petiolaris* and *Chaenomeles speciosa*. The Yew tree would be up-lit at night to create welcoming and dramatic effect.

**'Front Garden.'**

The entrance is marked and celebrated with a portal feature or 'lych-gate'; this provides a visual focus point and a shelter en route to the parking and the front door. This cedar clad 'porch' structure forms the entrance to the defined, private garden areas and incorporates steel grilles/trellis panels to encourage glimpsed views to the main entrance-door and provides a secure access.

Grilles also permit natural surveillance of the parking in 'Yew Yard' from the sitting-room and office/study. The entrance path is paved with slabs and gently slopes up to the front door to provide level-access. One gravel-paved car-parking space is provided within the fenced curtilage of the house.

The front garden is a sunny open semi-private space defined by walls, fences and a line of pleached trees (Lime or Hornbeam) on the southern boundary, which in time will screen the rear of overlooking properties. Sun loving species such as Lavender, Rosemary, *Eucalyptus gunii*, Juniper, grasses and Euphorbias could create a Mediterranean flavour to the garden. The garden is overlooked by the sitting room and study.

**'Family Garden'**

The back-garden is screened from public view by a 1600mm high rendered wall or fence adjacent to the front door that could be up-lit at night to create a welcoming space associated with the entrance.

This area associated with the family living room and kitchen continues along the sunny aspect of the house. South and west facing timber decking areas for family dining and relaxing are accessed from the sitting room and incorporate a barbecue and raised herb-beds.

A west-facing summer-house forms the vista-stop at the far end of the garden and the pleached trees (4-5m tall) are terminated at the east end of the area to retain views of the open sky to the south-east.

**'East and North Shade Gardens'**

A shady lush area influenced by Japanese gardens. The gravel and stepping-stones pavings are complimented by large leaved, evergreen species with stands of bamboo, tree-ferns, flowering shrubs and silver-variegated ground-cover.

Stands of multi-stemmed white-stemmed birches (*Betula utilis Jacquemontii*) and ornamental white-stemmed 'bramble' (*Rubus thibetanus*) are visible from the living room and kitchen; they provide dramatic features along the eastern boundary and screen the boundary wall and rear of the overlooking houses. Ground mounted uplighters would create a dramatic effect in the evenings.

**Initial Garden species list**

**South Garden**

An open aspect with full sun at midday with a blue and silver colour theme. Species include:

- Echinops ritro*
- Euphorbia wulfenii*
- Euphorbia griffithii* 'Fireglow'
- Lavandula 'Hidcote'*
- Lavandula 'Angustifolia'*
- Miscanthus* sp.
- Rosa 'Iceberg'*
- Rosmarinus 'Miss Jessop'*
- Stipa* sp.

Climbers on the south-facing pergolas could include

- Wisteria floribunda 'Alba'*
- Rosa 'Bobbie James'*

Taller feature plants could include:

- Amelanchia lamarkii*
- Eucalyptus gunii* (stooled to 10' to retain juvenile foliage)

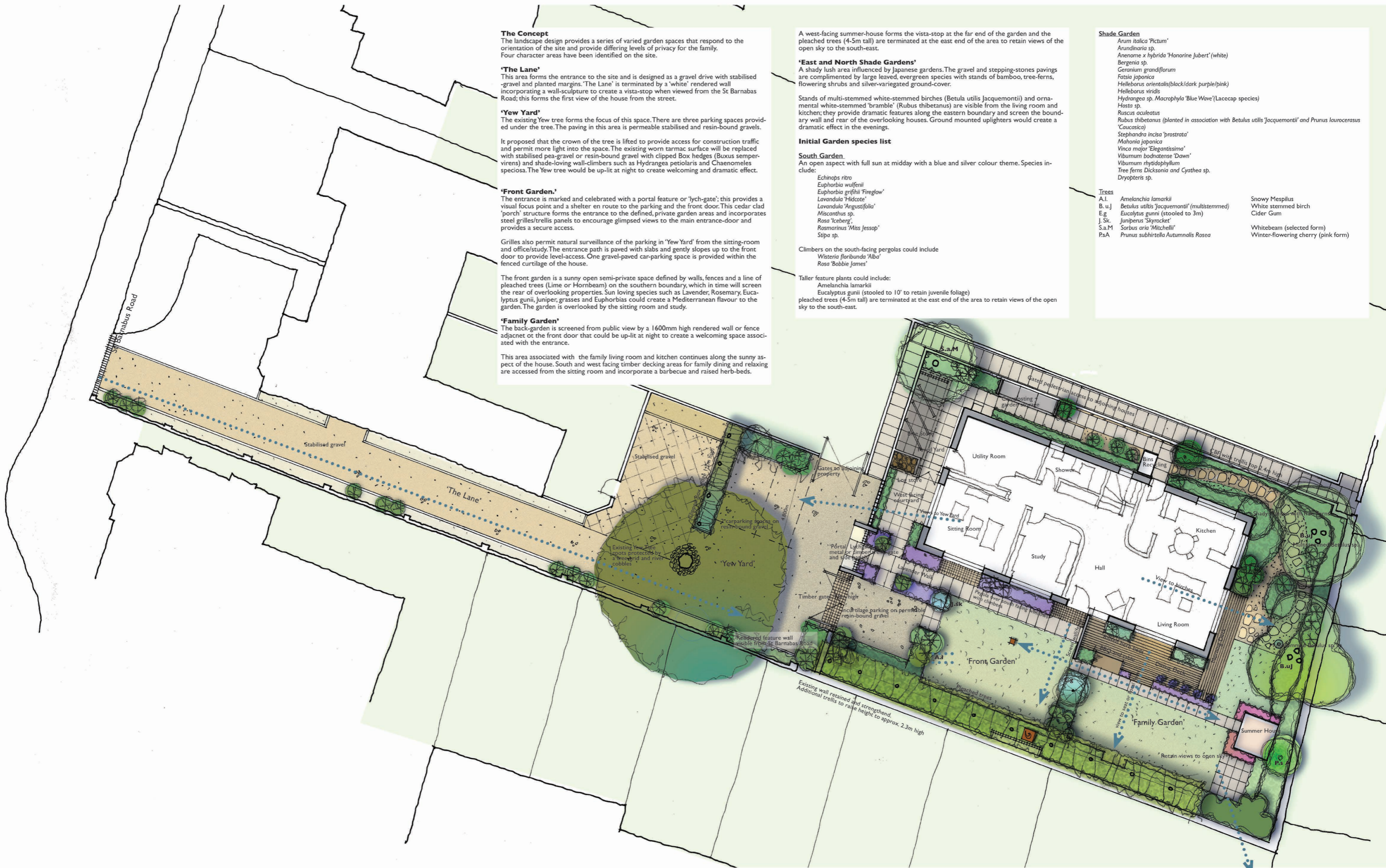
pleached trees (4-5m tall) are terminated at the east end of the area to retain views of the open sky to the south-east.

**Shade Garden**

- Arum italicum 'Pictum'*
- Arundinaria* sp.
- Anemone x hybrida 'Honorable Jubert'* (white)
- Bergenia* sp.
- Ceranium grandiflorum*
- Fatsia japonica*
- Helleborus orientalis* (black/dark purple/pink)
- Helleborus viridis*
- Hydrangea* sp. *Macrophylla* 'Blue Wave' (Lacecap species)
- Hosta* sp.
- Ruscus aculeatus*
- Rubus thibetanus* (planted in association with *Betula utilis 'Jacquemontii'* and *Prunus laurocerasus* 'Caucasica')
- Stephanandra incisa 'prostrata'*
- Mahonia japonica*
- Vincia major 'Elegantissima'*
- Viburnum bodinense 'Dawn'*
- Viburnum thiodaphyllum*
- Tree ferns *Dicksonia* and *Gyathea* sp.
- Dryopteris* sp.

**Trees**

- |        |  |                                     |
|--------|--|-------------------------------------|
| A.I.   | <i>Amelanchia lamarkii</i>                         | Snowy Mespilus                      |
| B. u.J | <i>Betula utilis 'Jacquemontii'</i> (multistemmed) | White stemmed birch                 |
| E.g.   | <i>Eucalyptus gunii</i> (stooled to 3m)            | Cider Gum                           |
| J. Sk. | <i>Juniperus 'Skyrocket'</i>                       |                                     |
| S.a.M  | <i>Sorbus aria 'Mitchellii'</i>                    | Whitebeam (selected form)           |
| P.s.A  | <i>Prunus subhirtella Autumnalis</i> <i>Rosa</i>   | Winter-flowering cherry (pink form) |





**Above. Sketch View of 'Family Garden'**  
The south-facing dining deck is accessed from the living/kitchen raised to create a level access with the internal floor; wide steps lead down to a lawn and West facing Summer House. The area incorporates a Barbecue table, raised beds for herbs and an English Lavender border (*Lavendula angustifolia*). The South-east corner is planted with shrubs under 3m tall to enjoy the views to the open sky between the blocks of housing.

The colour scheme for the garden is predominately blue, silver and grey with accent planting provided by Antipodean species including *Eucalyptus gunnii* and varieties of New Zealand Flax (*Phormium tenax*).



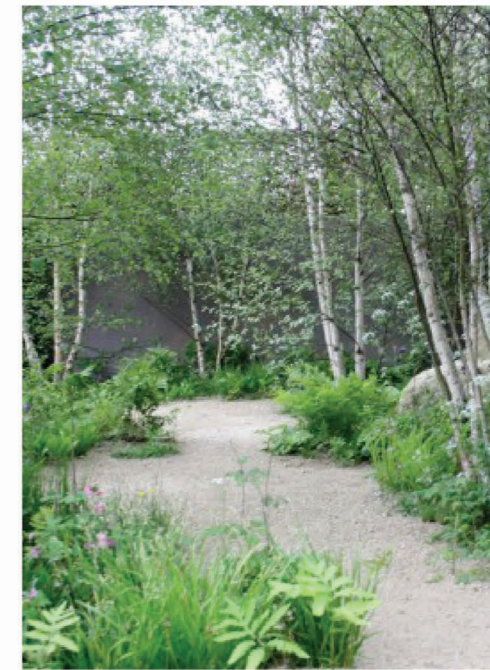
*Lavendula angustifolia*



*Eucalyptus gunnii*



*Phormium tenax* sp.



Multistemmed *Betula utilis* 'Jacquemontii'



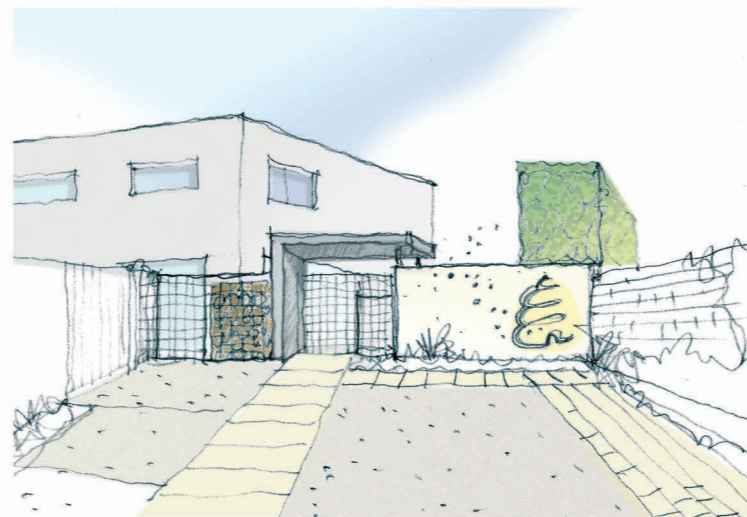
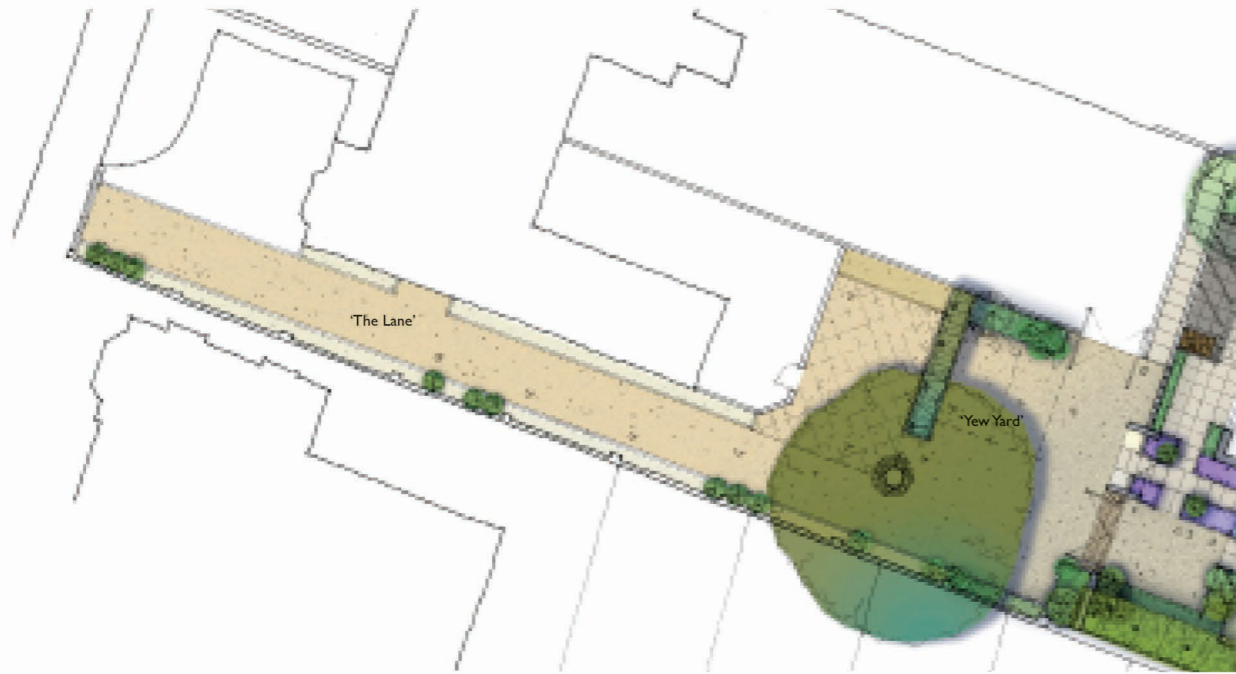
White and silver border suitable for south facing borders



Tree-ferns would be suitable for the shade garden

**Above and left. The Shade Garden**  
Tree-ferns and shade loving woodland species would create a lush Japanese garden character to the North and East of the house. These confined spaces are planted with stands of bamboo and ferns with meandering gravel and stepping-stone paths.

Stands of multi-stemmed white-stemmed birches (*Betula utilis* 'Jacquemontii') and ornamental white-stemmed 'bramble' (*Rubus thibetanus*) are visible from the living room and kitchen and provide dramatic features along the eastern boundary and screen the boundary wall and rear of the overlooking houses.



**Above. Sketch View of 'Entrance Portal'**  
'Yew Yard' is focused on the existing Yew tree (*Taxus baccata*) and is paved with resin-bound (see below) and stabilised gravel. It forms the entrance courtyard to the house with car parking and planting with formal species such as clipped Box and ferns. The 'Portal' or lychgate provides shelter at the entrance to the front garden and provides a legible marker.

The sketch above indicates the timber clad portal with visually permeable metal or timber trellis to gain glimpsed views into the garden and house elevation beyond. The wall that forms the vista stop from St. Barnabas Road could feature a wall-sculpture as a marker from the street. The line of pleached trees will be visible over the wall and screen the rear elevations of the adjacent flat (see right).



Pleached Hornbeam

Above. The pleached Limes (*Tilia* sp.) or Hornbeams (*Carpinus* sp.) planted at 2.4m centres and maintained at approx. 4-5m high will offer screening along the Southern boundary. They will be underplanted with mixed shrub and herbaceous border with a backdrop of 2 m high wall or dark stained fence and up-lit for evening interest.

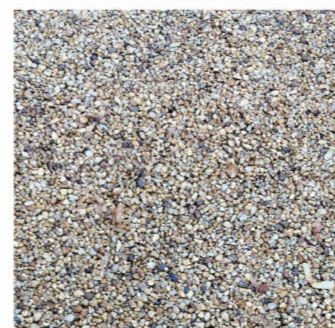
Left. A 2m tall mirror and trellis feature could create a 'light-catcher' focal point visible from the front door.



Far Left. Stained timber trellis mounted on top of brickwork boundary walls provides additional security and support for wall shrubs and climbers, e.g. *Rosa filipes* 'Kiftgate'.

Left. Lighting under adds drama and under the Yew tree in the entrance courtyard a welcoming effect at night.

Right. Ferns and box hedging mulched with loose gravel in the entrance courtyard under the Yew tree are shade tolerant species and add a green formality to the area. Year round interest could be provided by white flowered species such as *Geranium* 'Kashmir White'.



Land behind 16 St Barnabas Road, Cambridge.  
a garden for Mr and Mrs Reith

Landscape Plan 2 and Details  
Scale 1:100 @ A1

Drg. 010\_5

Sara Mark MA  
Placemaker: Landscape Architect

3 Marlowe Court  
Parkleys  
Richmond  
TW10 5LR

M. 07931 720615